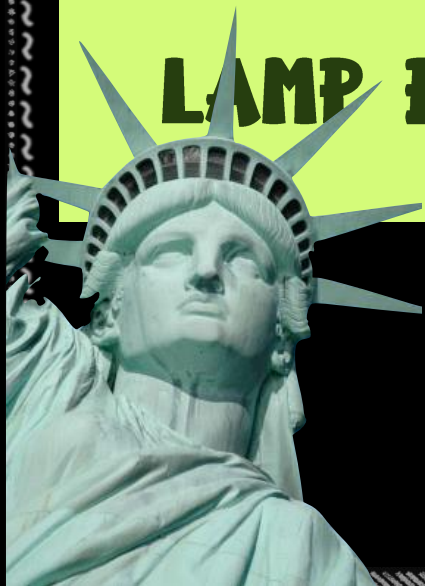




The eRa of ImmIGRaTIon



**“GIVE ME YOUR TIRED, YOUR POOR,
YOUR HUDDLED MASSES YEARNING
TO BREATHE FREE, THE WRETCHED
REFUSE OF YOUR TEEMING SHORE,
SEND THESE, THE HOMELESS,
TEMPEST-TOSSED, TO ME: I LIFT MY
LAMP BESIDE THE GOLDEN DOOR.”**



- Emma Lazarus

WHAT IS...

**The MELTING
POT?**

AMERICA:

THE MELTING POT



DEFINITION

A MIXTURE OF PEOPLE OF
DIFFERENT CULTURES AND
RACES

The period of 1870 –
1920 marks the
GREATEST PERIOD OF
IMMIGRATION IN
AMERICAN HISTORY!

The beauty of American
society is the diversity of
cultural contributions
EUROPEAN, LATINO, ASIAN,
NATIVE AMERICAN, PACIFIC
ISLANDER, ARAB

COOL. LET'S CHECK OUT...

**EUROPEAN
IMMIGRANTS**

EUROPEAN IMMIGRANTS



20 MILLION Europeans came to the US b/w **1870** & **1920!**

EARLY: MOST FROM WEST & NORTH

LATER: MOST FROM EAST & SOUTH

REASONS FOR COMING

ESCAPING RELIGIOUS PERSECUTION

RISING POPULATIONS IN EUROPE

SPIRIT OF REFORM AND REVOLT



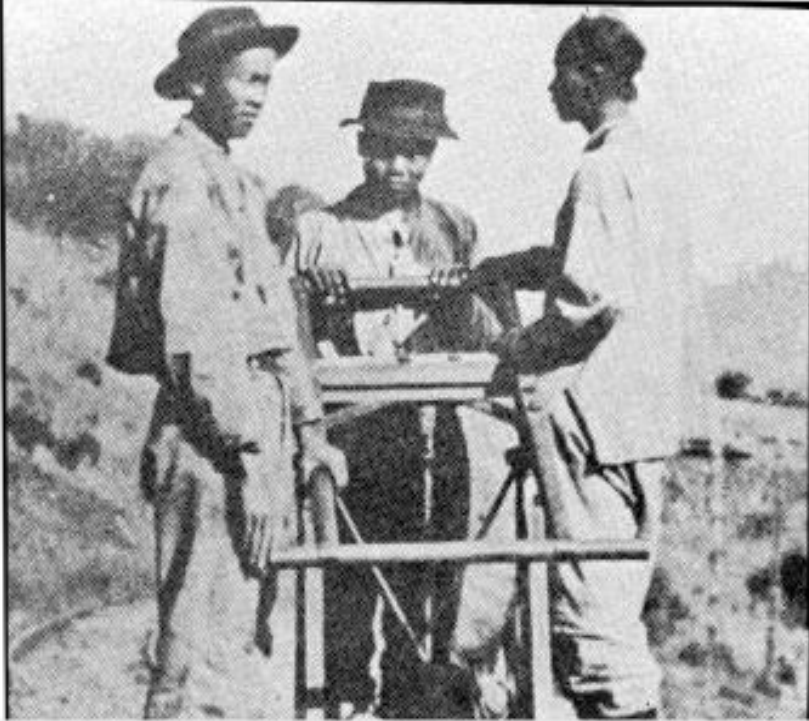
***ANALYSIS:* WHAT DO YOU SEE?**

NOW ON TO...

**asian
IMMIGRANTS**

WWW.WOKOILS.COM

ASIAN IMMIGRANTS



By 1920, over 200,000 Asian immigrants live on the West Coast

1848: Asians, particularly from China and Japan, come in droves seek fortune in CA Gold Rush work for cheap on railroads, boom towns some become miners, farmers

REASON FOR COMING

WAGES AND WORK

Hired b/c they work for less, they send salary home where it equates to more

OK. NOW WHAT ABOUT...

IMMIGRATION STATIONS



ELLIS ISLAND

IMMIGRATION station & checkpoint
IN **New York** ON the **east coast**

ARRIVAL point for **Europeans**
20% DETAINED, 2% SENT HOME

CONDITIONS

Had to pass a **health inspection**

Had to have **at least \$25**

Had to pass a **literacy test**

Had to have **proper paperwork**





***ANALYSIS:* WHAT DO YOU SEE?**



ANGEL ISLAND

IMMIGRATION station & checkpoint
IN **CALIFORNIA** ON THE **WEST COAST**

ARRIVAL POINT FOR **ASIANS**
VERY STRICT, PREJUDICE ENTRY

CONDITIONS

Subject to **HARSH INTERROGATION**
by **US GOVERNMENT OFFICIALS**

INSPECTORS DECIDED ENTRY, **NOT TESTS**

DETAINÉES HELD IN **FILTHY SHACKS**





***ANALYSIS:* WHAT DO YOU SEE?**

LASTLY, LET'S LOOK AT

**PROBLEMS FOR
NEW IMMIGRANTS**

SURVIVING

CULTURE SHOCK



ETHNIC COMMUNITIES
ALLOWED IMMIGRANTS
TO **WORK**, **LIVE**, and
WORSHIP W/ THEIR OWN
PEOPLE!

DEFINITION

PANIC & CONFUSION FACED
FROM LIVING IN A **STRANGE**
SOCIETY W/ NEW CUSTOMS
AND BELIEFS

ALLOWED AMERICANS TO **take**
advantage OF IMMIGRANTS
HIKED RENT, INFLATED PRICES,
THIEVES AND ROBBERY

TO SURVIVE, IMMIGRANTS MOVED
TO **ethnic communities**

OVERCOMING NATIVISM

DEFINITION

ANTI-IMMIGRANT SENTIMENT
AND **FAVORITISM** TOWARD
NATIVE-BORN WHITE
AMERICANS

Most IMMIGRANTS **assimilated**
into AMERICAN culture
THOSE THAT DIDN'T FACED THE
WRATH & PREJUDICE OF **NATIVISTS**

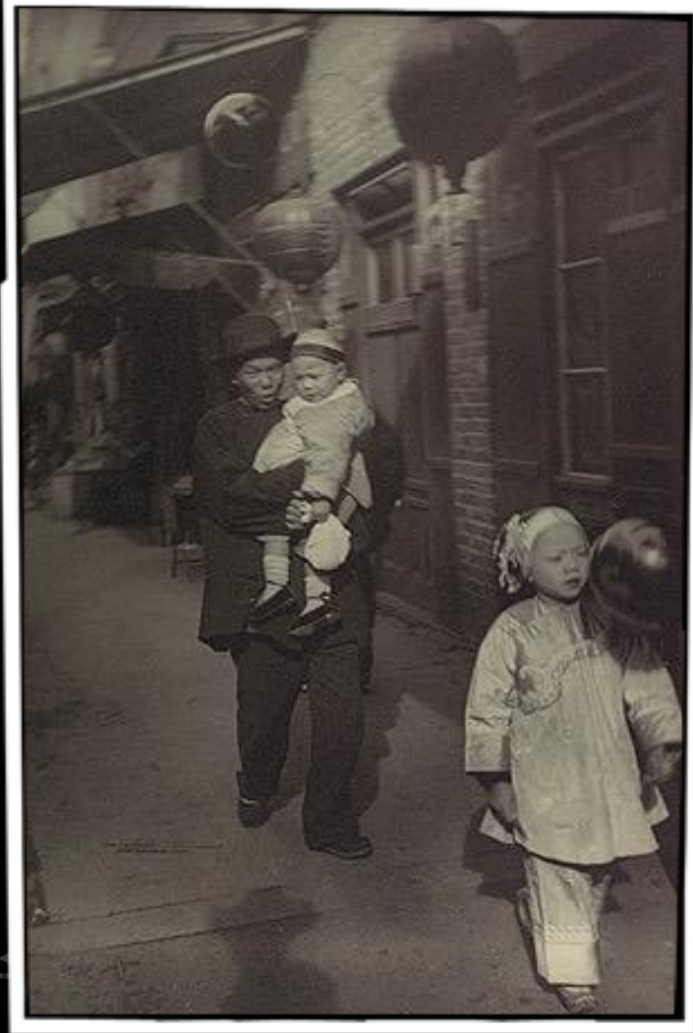


NATIVISTS GENERALLY
HATED **SOUTHERN &**
EASTERN EUROPEANS
and **ASIANs** MOST!

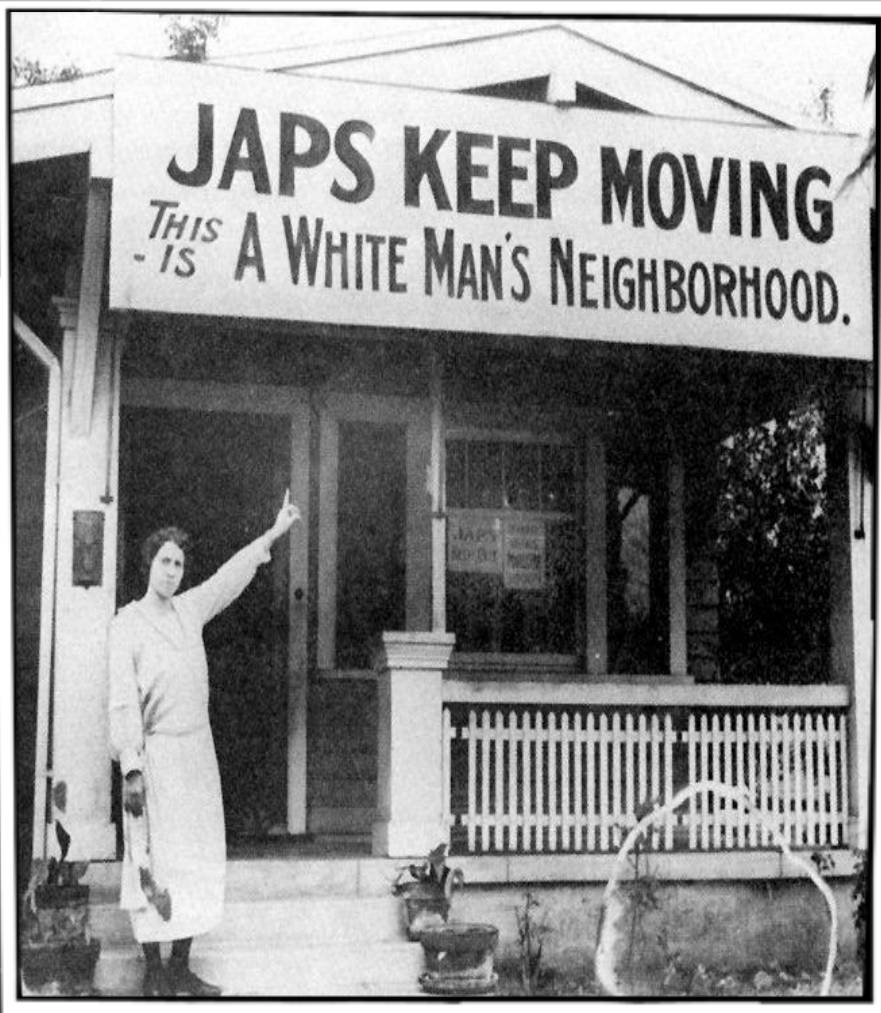
BATTLING ANTI-ASIAN SENTIMENT

ASIAN IMMIGRANTS faced
DISCRIMINATION MORE than any
other group
LANGUAGE, LOOK, CUSTOMARY
CLOTHING WAS STRANGE TO AMER.

AMERICANS feared they were
taking scarce jobs away
THEY WERE WILLING TO WORK FOR
LESS THAN WHITES
IF LEFT UNCHECKED, THIS RIFF-
RAFF WOULD RUIN AMERICA!



BATTLING ANTI-ASIAN SENTIMENT



American labor groups lobbied to end Asian immigration

CHINESE EXCLUSION ACT (1882)

Banned permanent Chinese immigration to the US for 10 years
1892 - EXTENDED ANOTHER 10 YRS
1902 - EXTENDED UNTIL 1943

GENTLEMEN'S AGREEMENT (1907)

Diplomatic agreement b/w Japan & US
US WOULD DESEGREGATE CA SCHOOLS
IF JAPAN LIMITED EMIGRANTS TO US

CLOSURE analyze the following:

