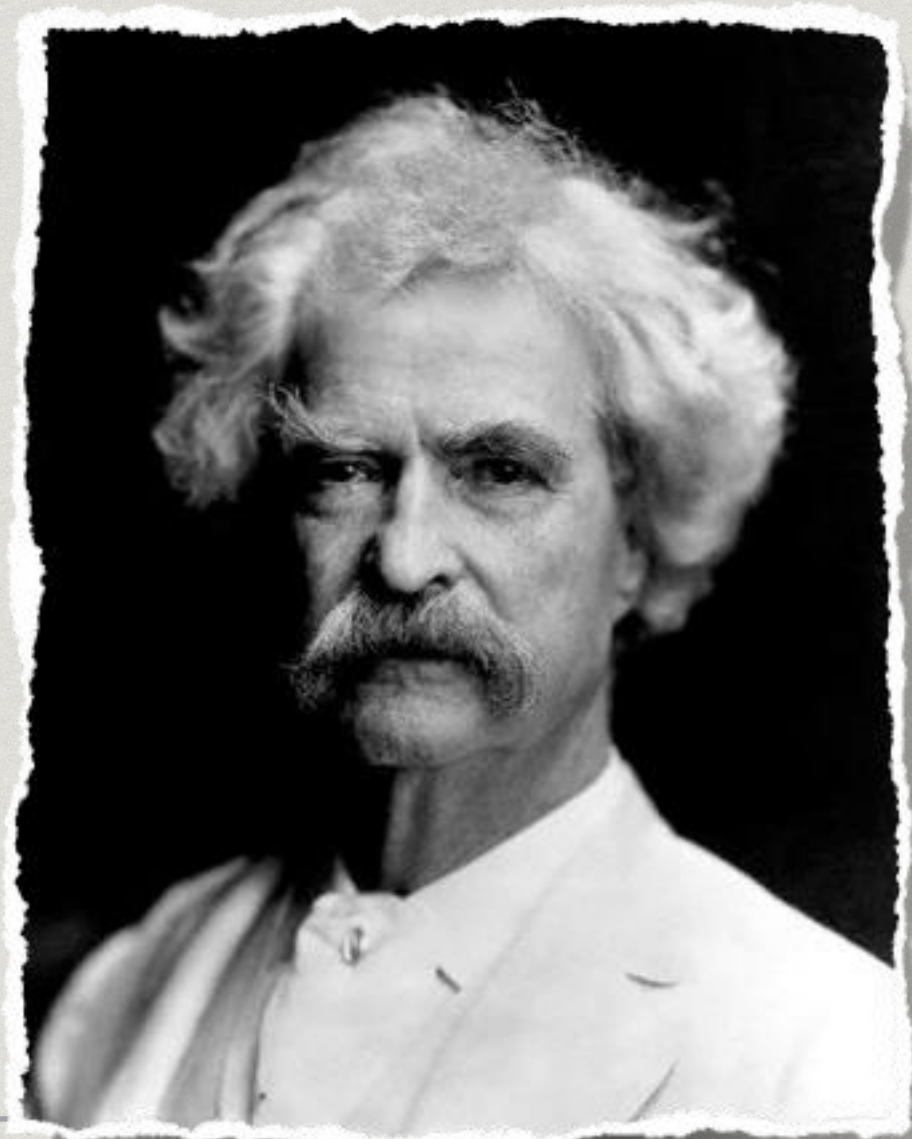
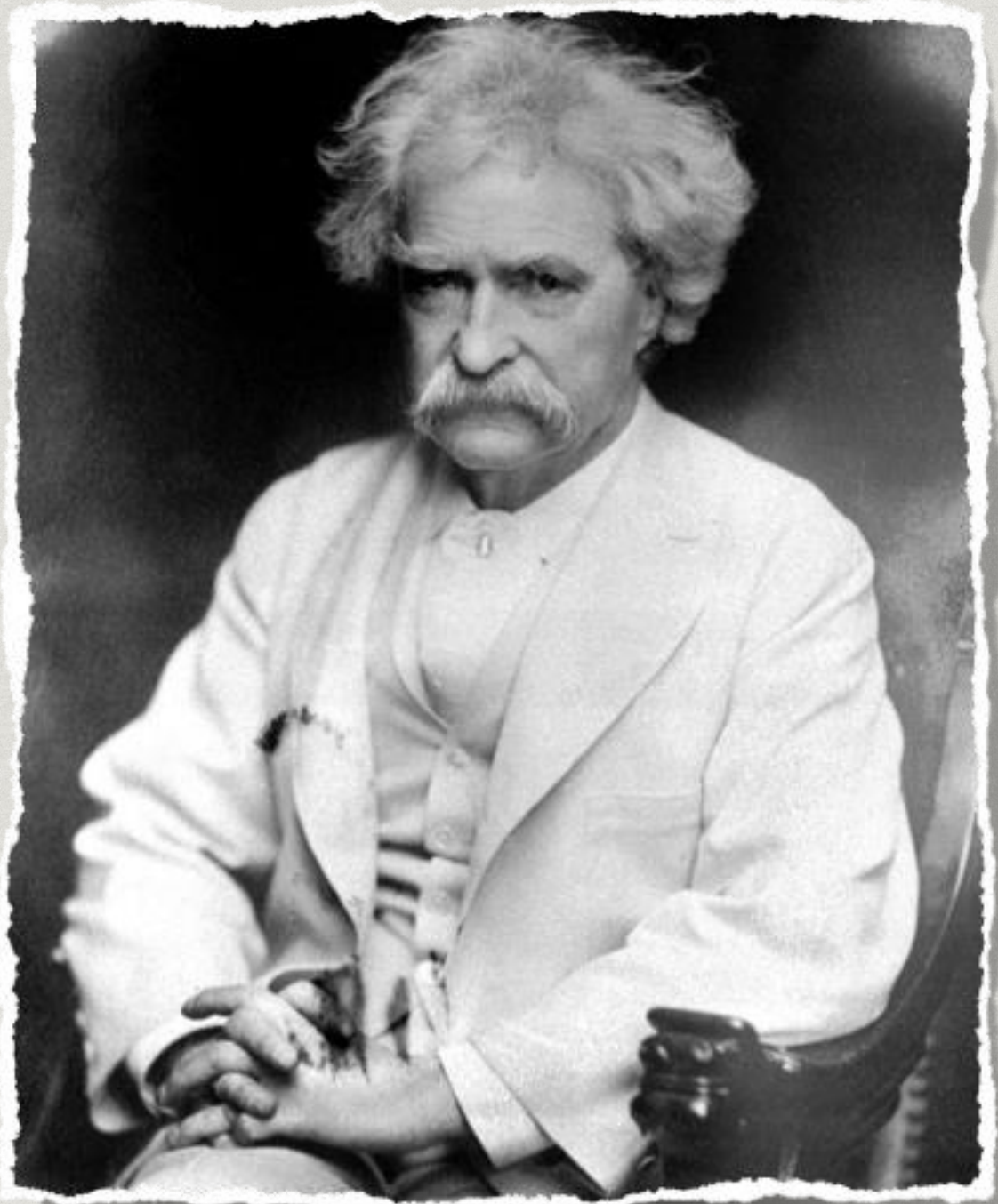


WHO? WHAT? WHY?



WHO? WHAT? WHY?





POLITICS OF THE GILDED AGE

**AS CITIES & POPULATIONS BOOMED, NEW
POLITICAL STRUCTURES FOUGHT FOR POWER**

LOCAL GOVS GREW INEFFICIENT



**POLITICIANS SOUGHT TO
MANIPULATE VOTERS & GAIN POWER**



**SECRET INTERNAL CORRUPTION
GOT POLITICIANS RICH**



WHICH LEADS TO...

THE POLITICAL MACHINE



"THAT'S WHAT'S THE MATTER."

BOSS TWEED. "As long as I count the Votes, what are you going to do about it? say?"

An **organized group** of **political officials** who **controlled** activities of a political party within a city

With **migration & urbanization**, political parties sought to **take advantage** of chaos to **control office**

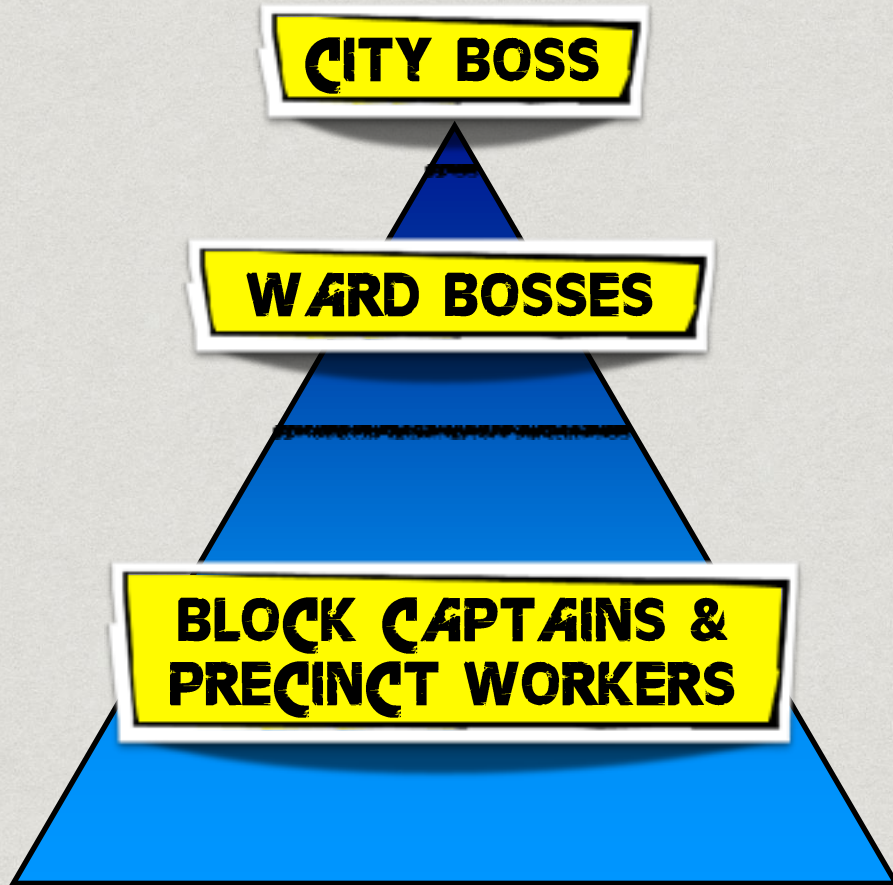
How?

...MANIPULATE VOTERS!

Officials gave **favors** and **perks** to voters & businesses in return for **support at the ballots**

"YOU GET MY BACK, I'LL GET YOURS!"

THE POLITICAL MACHINE STRUCTURE



Structure: **LIKE A PYRAMID!**

Block Captains & Precinct Workers
ROUNDED UP VOTES IN NEIGHBORHOODS &
CITY BLOCKS

ESCORTED VOTERS TO THE BALLOT BOX

Ward Bosses

GAVE LOCAL FAVORS, ENSURED PRECINCT
VOTES WERE SECURED

The City Boss

CONTROLLED MOST LOCAL SERVICES AND
CHOSE CANDIDATES TO ELECT

THE POLITICAL MACHINE STRUCTURE

CITY BOSS

Selects a candidate
for public office

JOBS, HOUSING, CITIZENSHIP, COURTS, PERKS
CONTROLLED BY THE CITY BOSS

WARD BOSSES

WARD BOSSES

WARD BOSSES

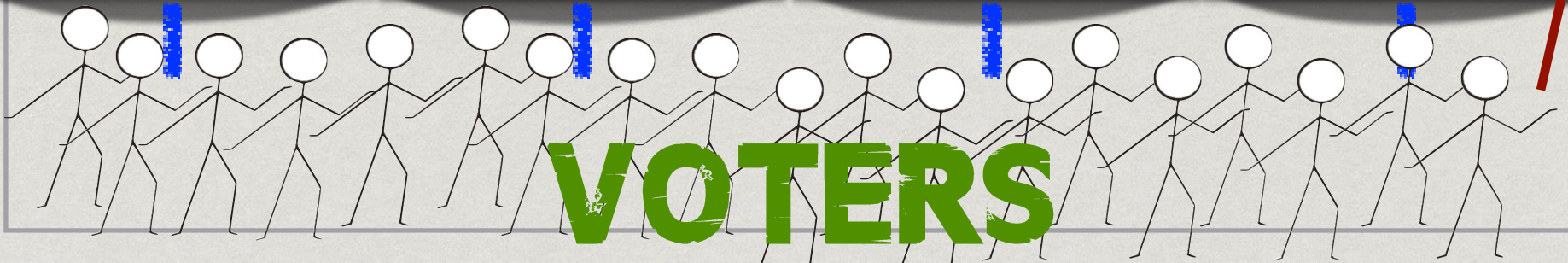
**BLOCK CAPTAINS &
PRECINCT WORKERS**

**BLOCK CAPTAINS &
PRECINCT WORKERS**

**BLOCK CAPTAINS &
PRECINCT WORKERS**

**BLOCK CAPTAINS &
PRECINCT WORKERS**

VOTERS



INFLUENCE OF THE MACHINES

Political Machines **PREYED** ON NEWLY-ARRIVED
IMMIGRANTS AND STRUGGLING
BUSINESSES THE MOST!

HOW IT WORKED

TOOK ADVANTAGE OF "CULTURE SHOCK", PROMISED **HOUSING**,
JOBS, & **QUICK NATURALIZATION** FOR WORRIED NEW IMMIGRANTS
HIRE **2ND GEN. IMMIGRANTS** TO SPEAK TO NEWBIES IN **NATIVE**
LANGUAGE
BUSINESSES COULD GET **QUICK LICENSES** AND **BYPASS**
PAPERWORK, SEE COMPETITORS "**DISAPPEAR**" IN RETURN FOR
CASH/VOTES

WHY IS THAT IMPORTANT?

- 1. ELECTED OFFICIALS WERE UNQUALIFIED "LACKEYS"**
- 2. ELECTORATE WERE INDEBTED TO CORRUPT OFFICIALS**

AS MACHINES GAINED CONTROL OF MORE CITIES, CORRUPTION BEGAN TO SPREAD...

machines became more BOLD WITH THEIR EXPLOITS, RESORTING TO OPEN CRIME and CORRUPTION



desire TO keep POWER led TO INEFFICIENT GOV., EXPLOITATION OF CITIZENRY



AND SO WE HAD...

GRAFT AND FRAUD



Graft: the illegal use of **political power** for **personal gain**

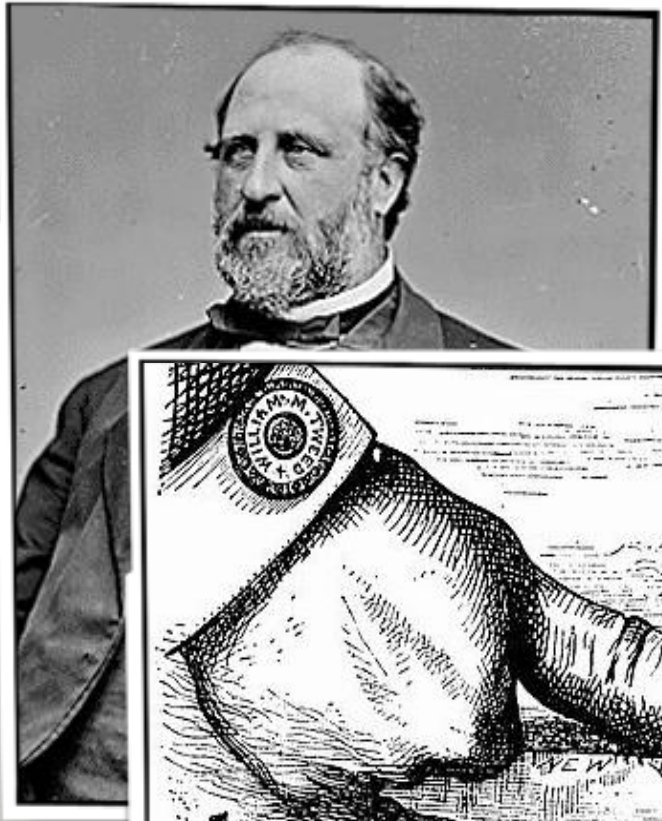
Machines would get "kickbacks" for employment

HAVE WORKERS **OVER-BILL** THE CITY FOR JOBS DONE AND THEN **SKIM OFF THE TOP** THEY CONTROLLED POLICE, TOOK PAYMENTS WHICH ALLOWED **ILLEGAL BUSINESS**

They would commit **voter fraud** when enough votes couldn't be bought

FAKE NAMES, DEAD PEOPLE

BOSS TWEED & TAMMANY HALL



The most famous political machine was **TAMMANY HALL** IN **NEW YORK**

RUN by "**BOSS**" **Tweed**, it was a **democratic machine** that **RAN NY**

Helped by negative cartoons by **Thomas Nast**, outrage over Tammany's **graft** led to its **downfall**

TWEED WAS ARRESTED AND CONVICTED OF FRAUD

ESTIMATES CLAIMED TWEED DEFRAUDED NY OUT OF 100 OF MILLIONS OF \$\$ IN KICKBACKS



THE YAKHAY TIGER SHOW.—“What are you going to do about it?”

**AS GRAFT WAS UNCOVERED, PUBLIC OUTRAGE
LED TO REFORM...**

**nationwide, politicians were
pressured to change ways
and prevent future fraud**

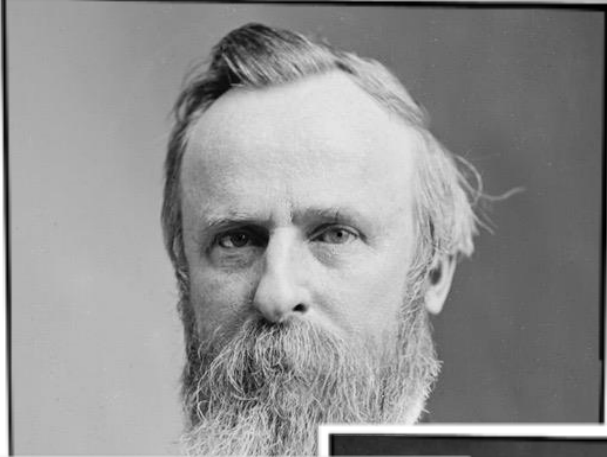


**Reforms uncovered the
corruption hidden under the
golden "Gild" of the age**



WHICH LEADS TO...

CIVIL SERVICE REFORM



MOVEMENT'S LEGACY

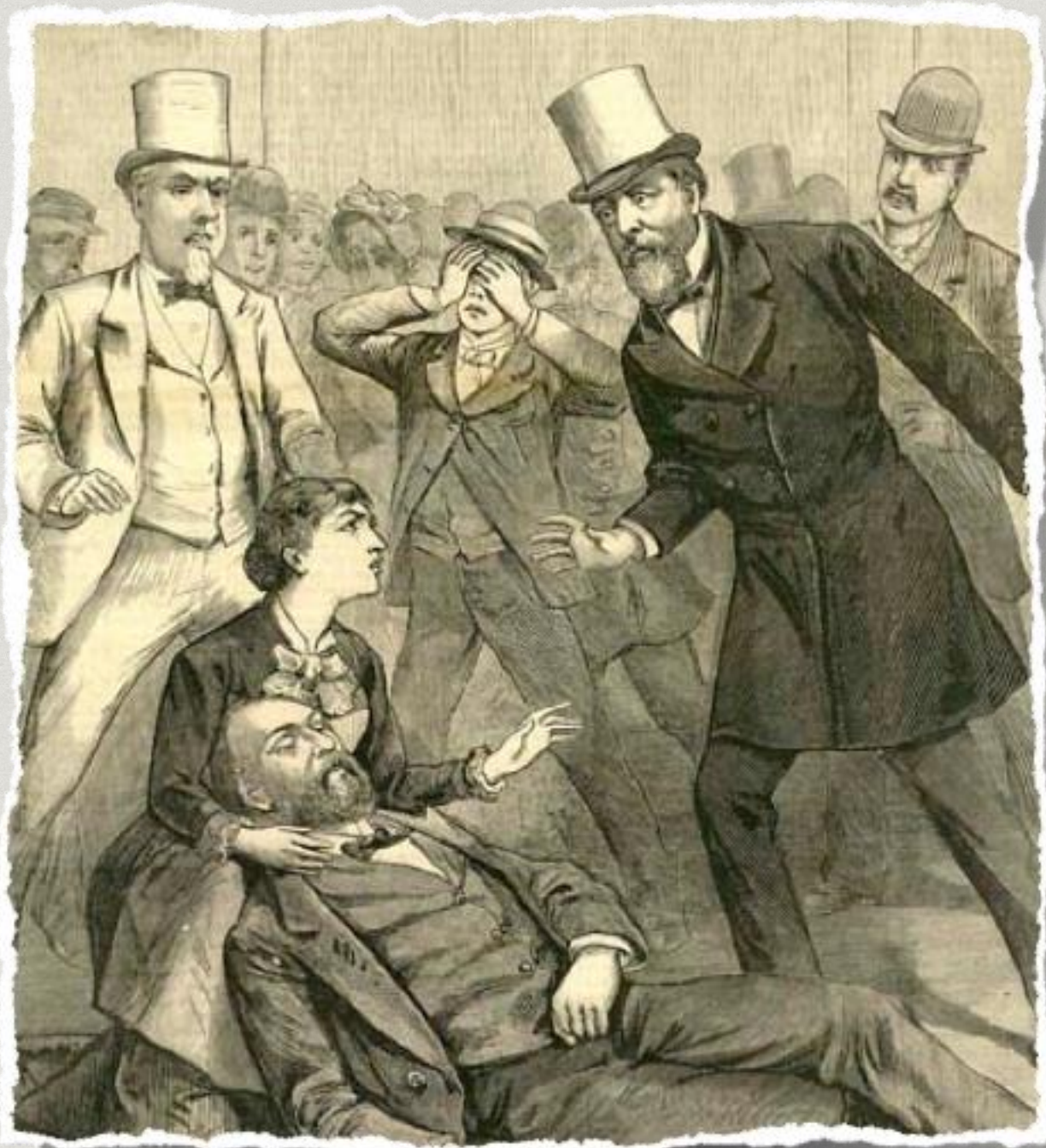
REPEALING PATRONAGE IN AMERICAN POLITICS

Presidents **Hayes** & **Garfield** repealed patronage & gave civil service jobs **based on merit**

SUPPORTERS OF PATRONAGE, STALWARTS, KILLED GARFIELD SO HIS STALWART VP, **CHESTER A. ARTHUR**, COULD BE PRES.

ARTHUR turned reformer, passed the **Pendleton Civil Service Act** **MADE IT MANDATORY** TO GIVE GOV **APPOINTMENTS BASED ON MERIT**







WASHINGTON, D. C.—THE ATTACK ON THE PRESIDENT'S LIFE—SCENE IN THE LADIES' BOOM OF THE BALTIMORE AND OHIO RAILROAD DEPOT—THE ARREST OF THE ASSASSIN.—From a sketch by one of the artist's assistants.

WHY IS THAT IMPORTANT?

**IT LEADS TO A NEW ERA OF
ACCOUNTABILITY AND
CONFIDENCE IN GOVERNMENT!**

CLOSURE

WRITE THREE THINGS YOU
LEARNED TODAY ABOUT:

- 1) The structure of the Political Machine
- 2) The methods used by Political Machines to manipulate the system
- 3) Civil service reform